



4-H

*ENTOMOLOGY  
CONTEST  
STUDY GUIDE  
NOVICE*



*AT CONTEST YOU  
WILL BE ASKED TO  
IDENTIFY*

*20 INSECTS*

from the photos included





Walking Stick



Ambush Bug



Ant



Carmel Cricket



Flea



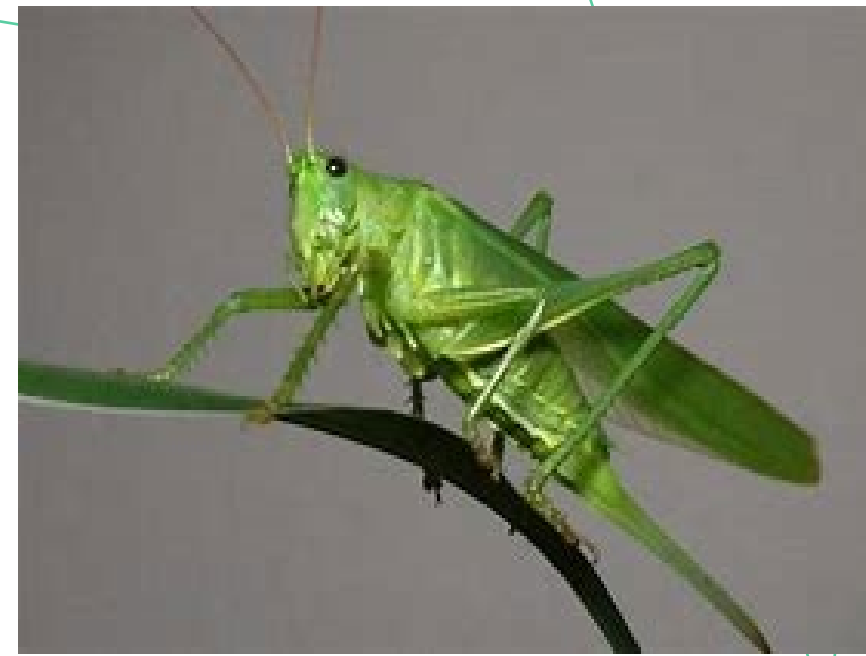
Swallowtail Butterfly



Bark Beetle



Treehopper



Long-horned Grasshopper



Water Strider



Water Boatman



Sphinx Moth



Aphid



Sowbug



Centipede



Green Lacewing



Mantid



Dragonfly



Ladybird Beetle



Scarab Beetle



Blow Fly



Honey Bee



Mosquito



Stink Bug



Darkling Beetle



Silverfish



German Cockroach



Spider



Vespid Wasp



Earwig